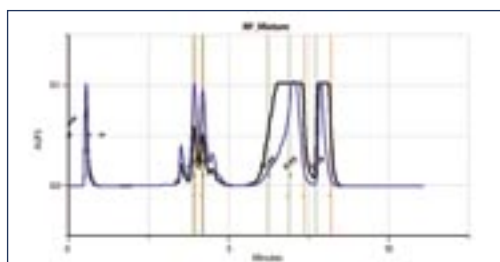


# cLC™ System

## The complete Liquid Chromatography System



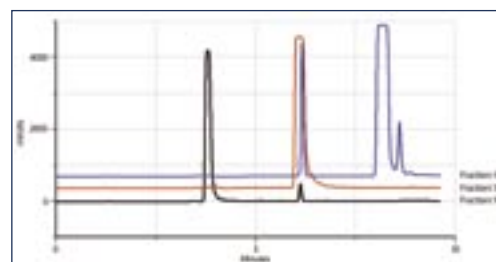
- One economical system to perform all of your chromatographic needs—saves on space and time
- Utilizes many reliable Gilson components
- Modular system approach accommodates existing Gilson 215 Reverse-Phase systems and easily facilitates upgrading to the cLC™ System
- Capable of performing more than 20 different chromatography applications on one system:
  - Analytical, Semi-Prep, Preparative
  - Reverse and Normal Phase, Chromatofocusing, Affinity, Size Exclusion, Ion Exchange, Flash, etc.



Prep Injection ... to



Fraction Collection ... to



Analytical Re-injection

## Injection and Fraction Collection with One Instrument

- Fraction collection pathway is separate from injection pathway
- Separated fraction collection pathway prevents the possibility of contamination from the injection process
- Automated injection and fraction collection with graphical sample tracking
- Graphical sample tracking makes quick and easy work of re-injecting fractions for purity and recovery

## High-Throughput Multi-Column Capabilities

- Purifies >15 g/column at flow rates up to 200 mL/min.
- Ability to incorporate disposable Flash Chromatography columns
- Accommodates up to 5 columns (analytical, semi-prep, and preparative) in a variety of sizes
- Multiple columns increase throughput and purify greater quantities of compounds



## Solvent Selection for Reverse- and Normal-Phase Applications

- Automated solvent selection and equilibration of up to 12 different solvents
- All solvents needed for an application are on the instrument and ready for use

## Flexible Detection

- Ability to easily incorporate various detection methods: UV/VIS, ELSD, RI, MS, or any form of detection that sends an analog output signal
- Multiple detection choices make the system compatible with many types of analysis—making it a truly complete LC system



## Analytical and Prep

- Analytical path is separate from the Preparative path and iPA equilibration methods switch between Reverse and Normal phase
- Automated and reliable switching between Normal- and Reverse-Phase and Preparative and Analytical methods

Gilson, Inc. World Headquarters  
3000 W. Beltline Hwy.  
P.O. Box 620027  
Middleton, WI 53562-0027 USA  
Telephone: 800-445-7661 or 608-836-1551  
Fax: 608-831-4451

Gilson S.A.S.  
19, avenue des Entrepreneurs  
BP 145  
F-95400 VILLIERS LE BEL France

[www.gilson.com](http://www.gilson.com)  
[sales@gilson.com](mailto:sales@gilson.com), [service@gilson.com](mailto:service@gilson.com), [training@gilson.com](mailto:training@gilson.com)

303123-02. Printed in the USA. Specifications subject to change without notice. Gilson, Inc. and Gilson S.A.S. are ISO 9001 certified. 