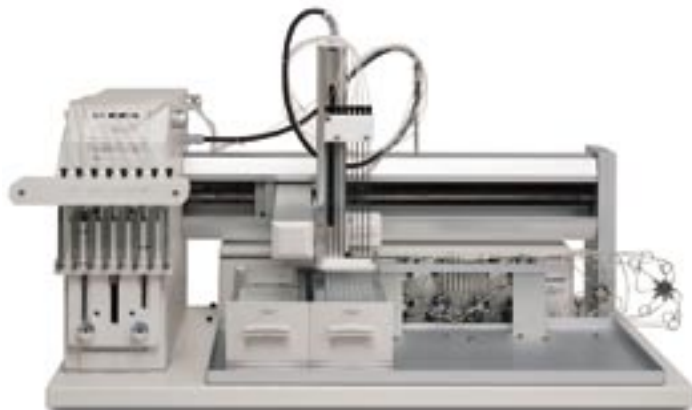


Multiple Probe 215 Liquid Handler/Injector



High-Throughput, Large Capacity Liquid Handler/Injector

- Flexible, large-capacity multiple-probe liquid handler processes four or eight samples simultaneously; also performs injection into four or eight systems simultaneously
- High-throughput capacity with outstanding speed and performance
- Patented Dual Rail™ syringe drive technology allows for accurate use of one to eight syringes and probes to fit your requirements
- Ideal for bulk reagent dispensing

Applications

- High-throughput automation of basic liquid handling tasks such as: sample transfer, dilutions, mixing, reagent addition and plate reformatting
- A powerful instrument for high-throughput injection onto FIA/MS, parallel HPLC and MUX systems using the optional 889 Multiple Injection Module
- Parallel injection onto HPLC or LC/MS systems

Technical Specifications

Arm Speed	X: >45.7 cm/sec (>18 in./sec) Y: >40.6 cm/sec (>16 in./sec)	
Communication Interface	RS-232 or GSI0C; Four inputs (contact closure, TTL or open-collector), four relay outputs and one switched +24V DC 1A output	
Front Panel	START and emergency STOP soft keys	
Display Panel	8-character LCD	
Horizontal Motion Strength	X: 5 kg (11.1 lbs.) Y: 7 kg (15.6 lbs.)	
Injection	Volume: 5 µL–5 mL Reproducibility: <2.0% CV with 500-µL syringe and partial loop filling method; <5.0% CV with 500-µL syringe and total loop filling method Carryover: <0.05%	
Liquid Handling	Reproducibility: 0.57% CV with 500 µL of water Accuracy: 99.2% with 500 µL of water	
Locator Plate Capacity	Up to five Code 200-Series racks, or one Code 505 or 505H rack plus one Code 200-Series rack	
Manufacturing Standards	Meets applicable Safety and EMC certification standards; UL and CE certified	
Maximum Syringe Flow Rates for Water (with eight syringes installed)	Syringe Size (µL)	Max. Flow Rate (mL/min)
	100	0.42
	250	0.80
	500	2.11
	1000	4.22
	5000	12.50
Maximum Syringe Flow Rates for Water (with four syringes installed)	Syringe Size (µL)	Max. Flow Rate (mL/min)
	100	0.75
	250	1.50
	500	4.25
	1000	8.50
	5000	25.00
Power Requirements	Frequency: 50–60 Hz Voltage: 100–120 and 200–240V, mains voltage fluctuations not to exceed ±10% of the nominal voltage Current rating: 2.0A for 100–120V or 1.0A for 220–240V	
Probe Positioning Performance	Accuracy: ±0.5 mm in X/Y dimensions, ±1 mm in Z dimension Repeatability: ±0.25 mm in X/Y/Z dimensions	
Probe Rinse	Through a dedicated rinse station for rinsing the inside and outside of the probes	
Sampler Type	X/Y/Z with stationary rack design	
Software	Via Gilson UniPoint™ System Software or TRILUTION™ Software	
Syringe Capacity	100, 250 or 500 µL; 1, 2.5 or 5 mL	
Syringe Pump	Integral, high-precision, eight-piston syringe pump	
Vertical Punch Strength	0.6 kg/probe (1.4 lbs./probe)	
Dimensions (w x d x h)	97.8 x 61 x 55.8* cm (38.5 x 24 x 22* in.) *Maximum height. Z-arm height is adjustable to accommodate vessel heights between 1 and 150 mm (dependent on installed Z-arm)	
Weight	39.9 kg (89 lbs.)	

For applications or additional information, contact your local Gilson Technical Sales Representative or visit www.gilson.com.

Gilson, Inc. World Headquarters
Middleton, WI 53562 USA
Telephone: 800-445-7661 or 608-836-1551
Fax: 608-831-4451

Gilson S.A.S.
19, avenue des Entrepreneurs
F-95400 VILLIERS LE BEL France

www.gilson.com
sales@gilson.com, service@gilson.com, training@gilson.com

